

Use the included sources to consider some of the following questions as they relate to the below standard. These photos can also be used with the Primary Source Photo Analysis Worksheet.

K.C.KGO.1 Identify leaders in the local community, and explain their roles and responsibilities

K.H.KH.1 & 1.H.KH.1 Compare life in the past to life today in communities.

K.H.CH.1 Identify and describe how communities change over time.

1.E.KE.1 Identify and describe what goods and services are produced in different places and regions in Kentucky.

What is the role of a firefighter? How do they work to keep communities safe?

What makes a police officer or sheriff a leader? What might they need to know to do their job?

Why might a newspaper person be considered a leader in a community?

What are the roles and responsibilities of teachers?

Using these photos can you identify ways in which life has changed? What used to exist, but no longer does? What still exists, but in a different way?

What kind of goods were produced in Bourbon County? Are they still produced?

What are some things people did for fun? How are they similar or different from what you do today?



City of Paris Firemen in front of the city office building, 1933



Deputy Sheriff, Jason Gibson, 1917



Larry Buchanan delivering mail in the Clintonville area



Millersburg City officials, 1902



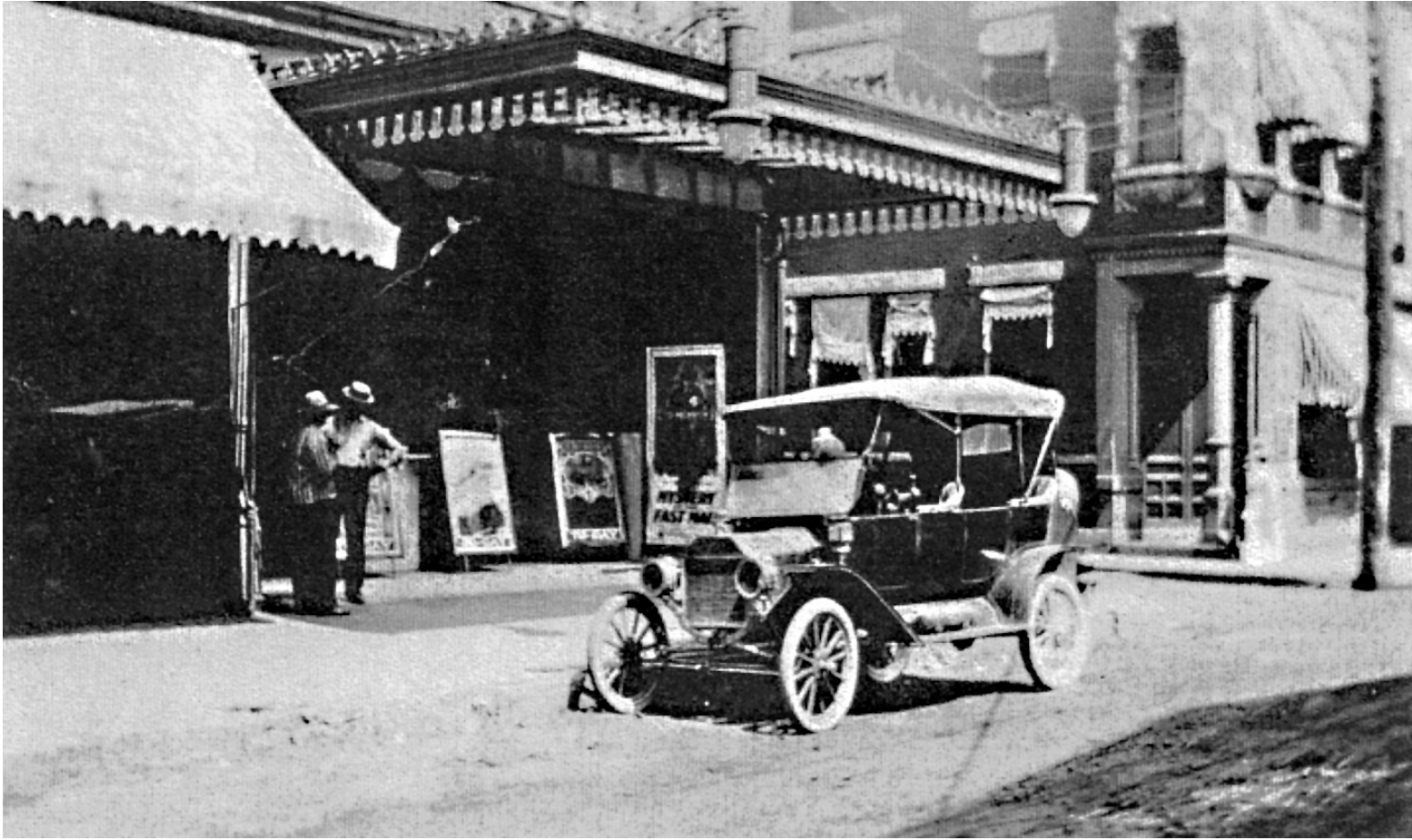
Newspapermen of the Kentuckian Citizen



Paris Western School Teachers



Paris night Police Chief, John Patrick Maher



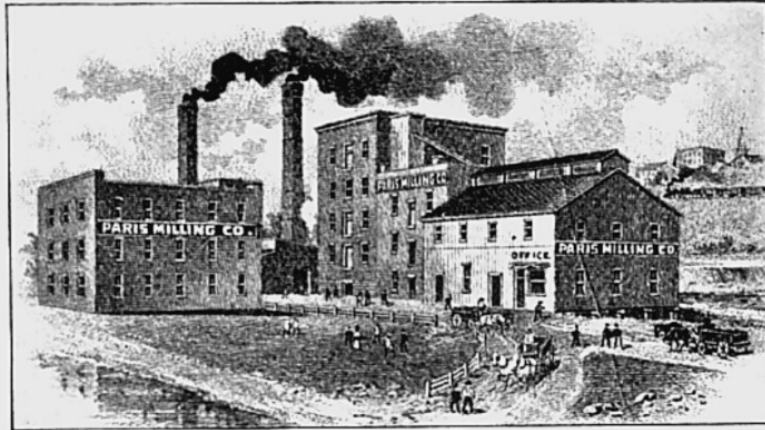
Early model of car in Paris, Kentucky



Horse drawn wagon with two children on top.



Mill on Hinkston Creek, Millersburg, Kentucky



PARIS MILLING CO.

CAPACITY, 200 BARRELS DAILY.

Manufacturers of the Well-known Brands :

Purity - Success - Crystal - Royal
(PATENT) (STRAIGHT) (PATENT) (FAMILY)

Is Sold by all Popular, Progressive and Pushing Grocers.

It makes Bread that Looks Good, Tastes Good and IS Good.

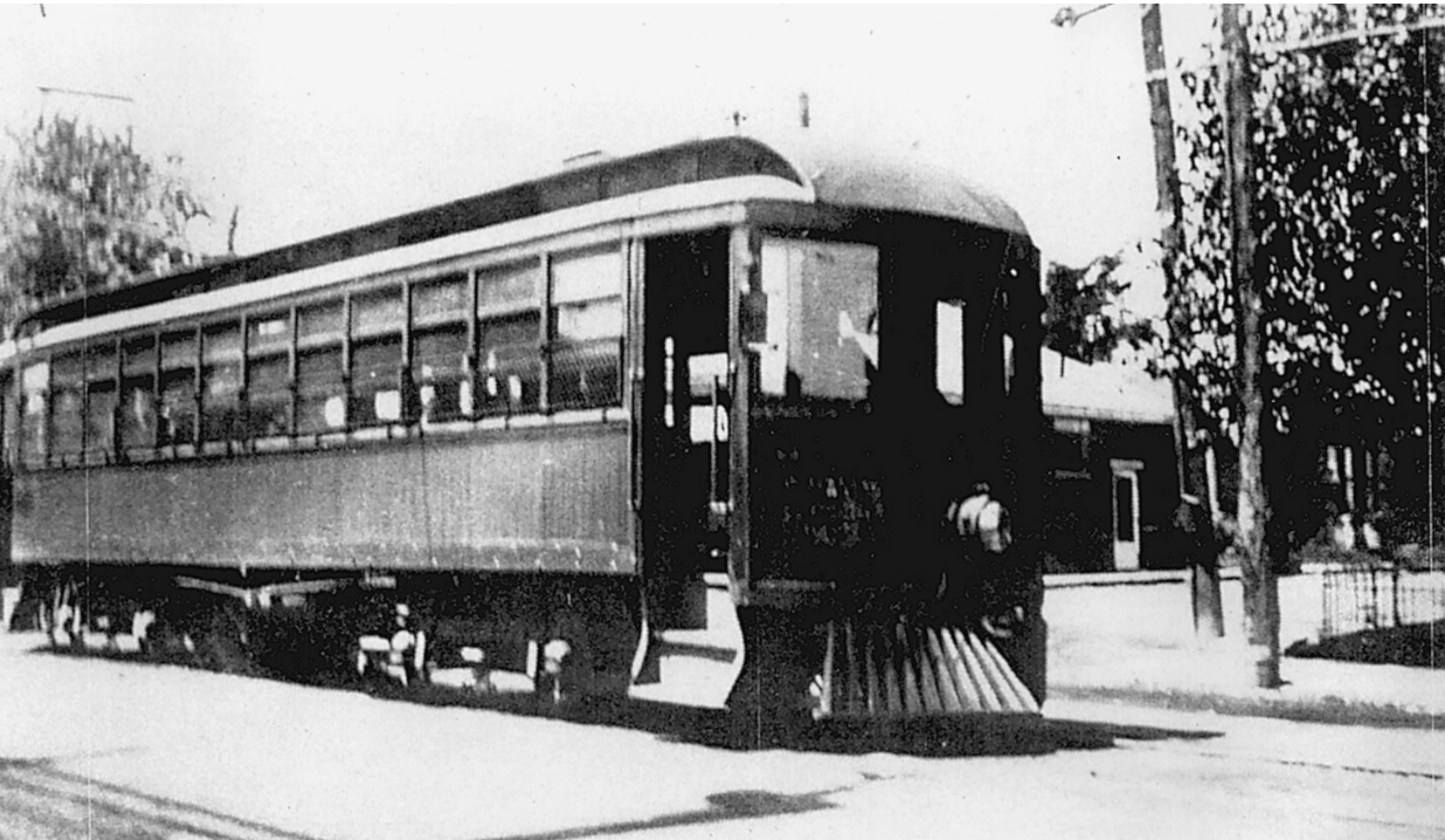
“The flour the best cooks use,
The flour you ought to choose.”

The Flour that Made Paris Famous. B. M. RENICK, Manager.

Ad for Paris Milling Company



Woman in horse drawn sleigh in winter



Paris-Lexington Interurban Car, 1905

PARIS AND LEXINGTON INTERURBAN SCHEDULE

EFFECTIVE FEBRUARY 22, 1932.

Leave Paris For Lexington

6:50 A. M.
 x7:23 A. M.
 7:53 A. M.
 8:53 A. M.
 9:53 A. M.
 11:23 A. M.
 12:53 P. M.
 2:23 P. M.
 3:53 P. M.
 4:53 P. M.
 5:53 P. M.
 7:10 P. M.
 9:10 P. M.
 10:53 P. M.

Leave Lexington For Paris

5:50 A. M.
 x6:30 A. M.
 7:00 A. M.
 8:00 A. M.
 9:00 A. M.
 10:30 A. M.
 12:00 M.
 1:30 P. M.
 3:00 P. M.
 4:00 P. M.
 5:00 P. M.
 6:00 P. M.
 8:00 P. M.
 10:00 P. M.

KENTUCKY TRACTION AND TERMINAL COMPANY

NOTE—x indicates that car runs daily except Sunday.
 Ticket Fare One Way 40c—Round Trip 70c.

Paris-Lexington Interurban Schedule, 1932



African American workers breaking hemp in Bourbon County



Peacock Distillery workers
and bottle label.
Paris, Kentucky



Whiskey barrel wagon



Chicken Cock Distillery, Bourbon County



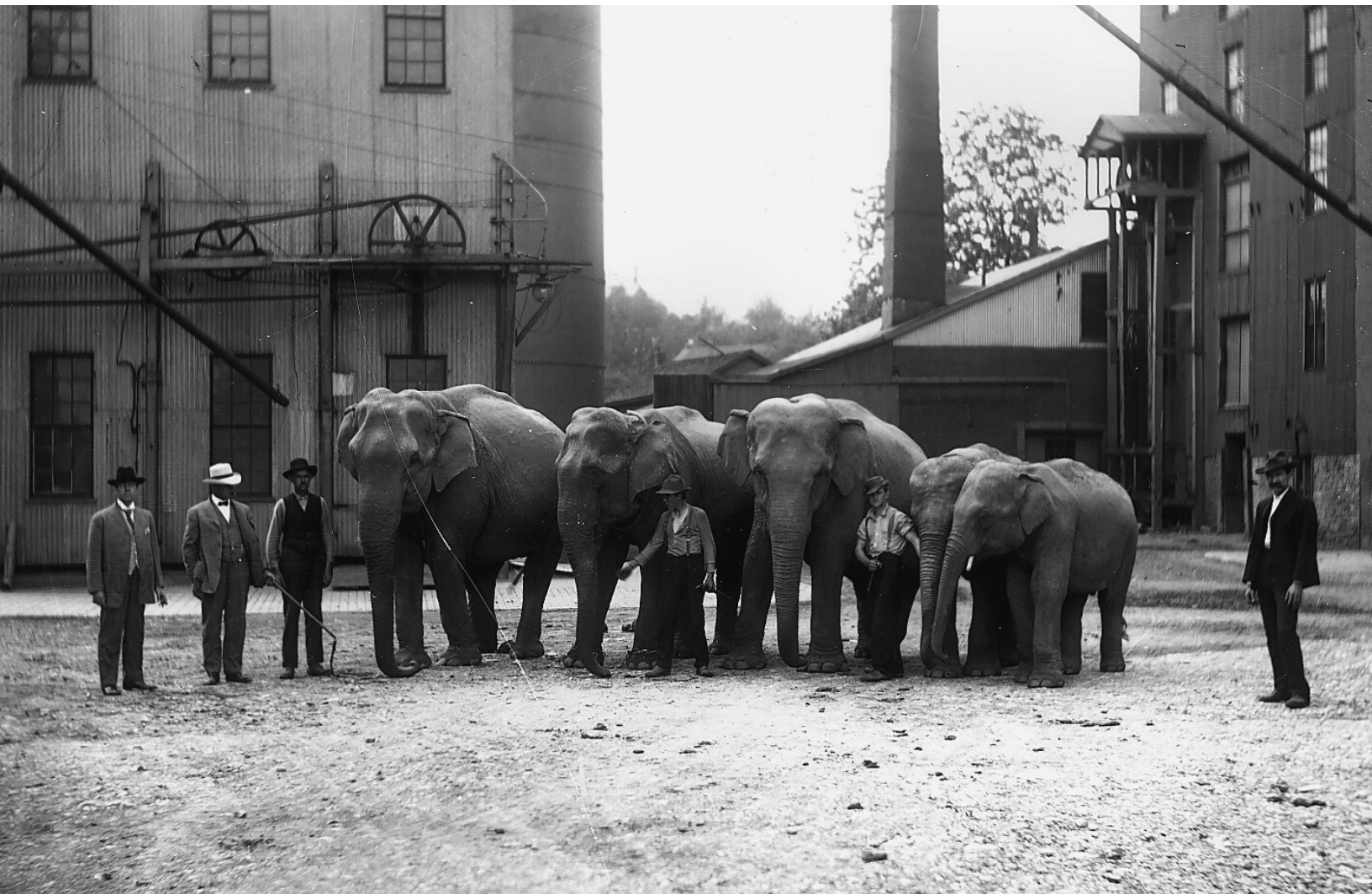
Main Street, Paris, Kentucky Postcard



Paris Opera House (which became Bourbon Theater)



Croquet party on lawn



Men with circus elephants in Paris, Kentucky